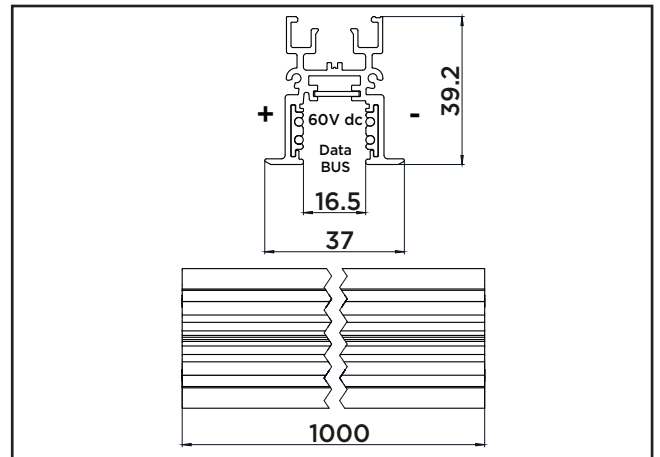
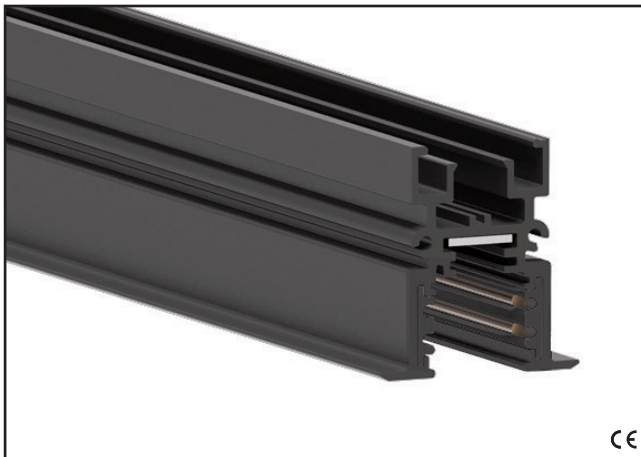


LOW VOLTAGE TRACKS

ST8

RECESSED LOW VOLTAGE 4 CONDUCTORS TRACK 9500-1/B-ST8 9500-1/W2-ST8




Technical data

• Rated current and voltage

15A / 60V dc

Characteristics

- 2 circuits: 2x +/- 15A/0-60V dc
- 1 circuit + Data Bus: +/- 15A/0-60V + D+/D-
- Length: 1000 mm, 2000mm, 3000 mm
- External extruded body in aluminium.
- Available colours: Embossed black RAL 9005(B) and embossed white RAL 9016 (W2)
- Insulated extruded body in PVC
- Copper conductors
- Quality marks : Class 2 (2A - 48Vdc / 4A - 24V dc )
- European directives : "RoHS" compliant
- Track for both polarized and non polarized versions



Trimless
fixing

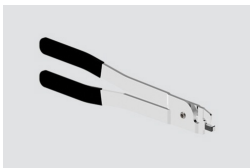
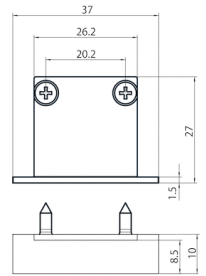


Class III

Track accessories



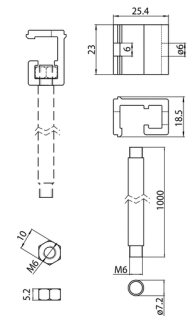
9504/ST8-B
9504/ST8-W2
END CAP FOR RECESSED TRACK 9500-...-ST8



S-9000/T
CUTTING TOOL FOR TRACK CONDUCTORS

Suspension sets

S-9000-P4
SUSPENSION SET



Connections



9501-S/B-E
9501-S/W-E
SHORT END-FEED



Snap - in
Fixing



Terminals with
screw and nut



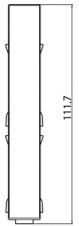
Solid CU wire
or solder clipped
stranded or
bonded stranded
conductors



Wires
stripping



SELV
Class III



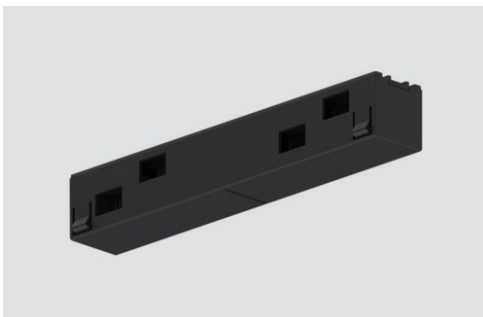
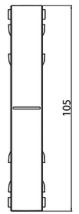
9503-S/B-E
9503-S/W-E
JOINTING CONNECTOR



Snap - in
Fixing



SELV
Class III



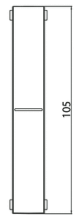
9503-S/B-M-E
9503-S/W-M-E
MECHANICAL JOINTING CONNECTOR



Snap - in
Fixing



SELV
Class III



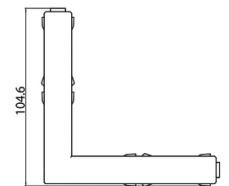
9511/B-E
9511/W-E
L FEED



Snap - in
Fixing



SELV
Class III



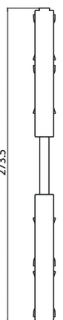
9518-S/B-E
9518-S/W-E
ADJUSTABLE CORNER



Snap - in
Fixing



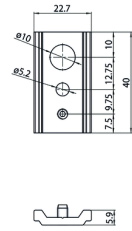
SELV
Class III



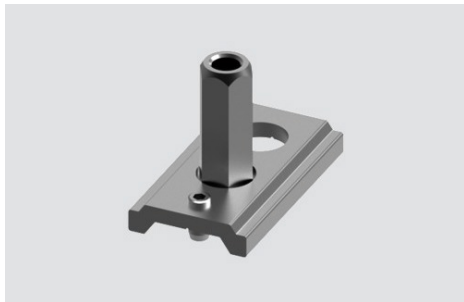
Brackets



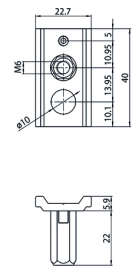
S-9500/313-LA
SHORT BRACKET FOR SUSPENSIONS



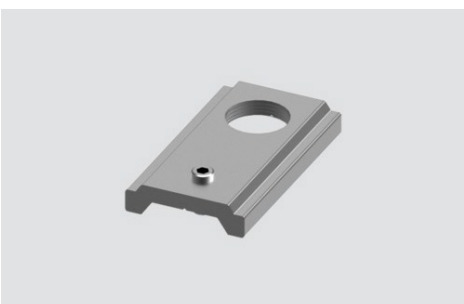
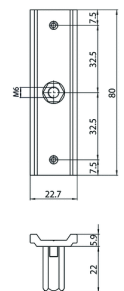
S-9500/323-LA
BRACKET FOR "IN ROW" USE JUNCTION



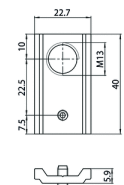
S-9500/313-M6
SHORT BRACKET FOR SUSPENSIONS



S-9500/323-M6
BRACKET FOR "IN ROW" USE JUNCTION



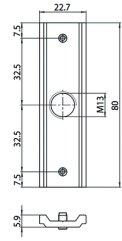
S-9500/313-M13
SHORT BRACKET FOR SUSPENSIONS



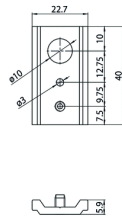
Brackets



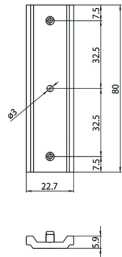
S-9500/323-M13
BRACKET FOR "IN ROW" USE JUNCTION



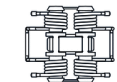
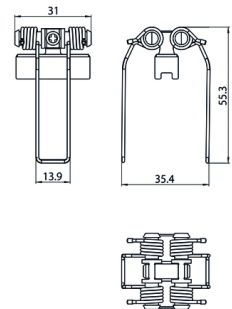
S-9500/313-SV
SHORT BRACKET FOR SUSPENSIONS



S-9500/323-SV
BRACKET FOR "IN ROW" USE JUNCTION



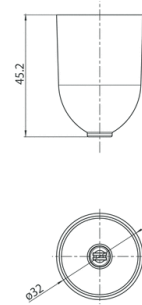
S-9500/316
BRACKET WITH SPRING



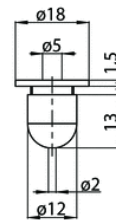
Cups



S-9000/3-B
S-9000/3-W
PLASTIC CUP FOR STEEL CABLE Ø 1,5 MM



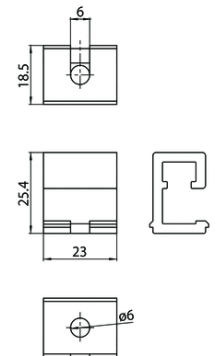
S-9000/216
ROUND HEAD CEILING ATTACHMENT WITH HOLE



Ceiling fixing Brackets



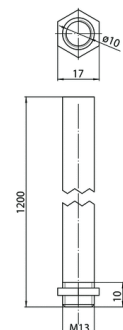
S-9000/132
CEILING BRACKET FOR SUSPENSIONS



Stem



S-9000-1,2/604-B
S-9000-1,2/604-W2
STEM WITH M13x1 END AND NUT

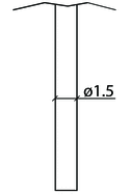


Cables



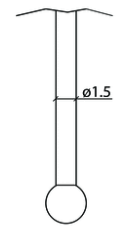
S-9000/211-1,5
S-9000/211-3
S-9000/211-5

STEEL CABLE



S-9000/211-S-1,5
S-9000/211-S-3
S-9000/211-S-5

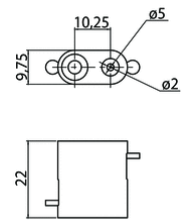
STEEL CABLE WITH SPHERICAL END



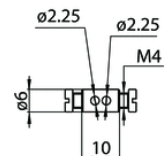
Grippers



S-9000/214
AUTOMATIC LOCK



S-9000/215
SCREW GRIPPER



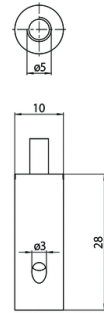
LOW VOLTAGE TRACKS

ST8

Grippers



S-9000/218
AUTOMATIC M5 GRIPPER WITH SIDE HOLE



602/F
SET SCREW FOR GRIPPER ON THE BRACKET

