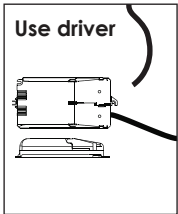
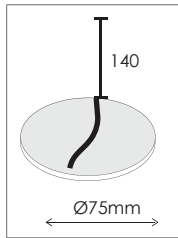


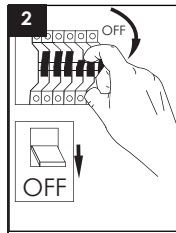
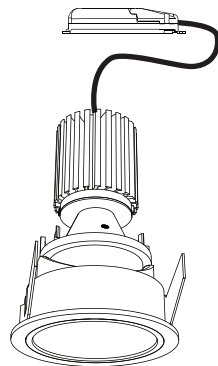
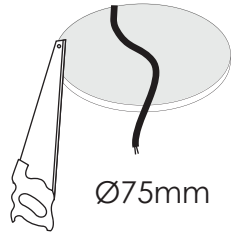
VATES 12 S.S.LED

indoor/ downlights

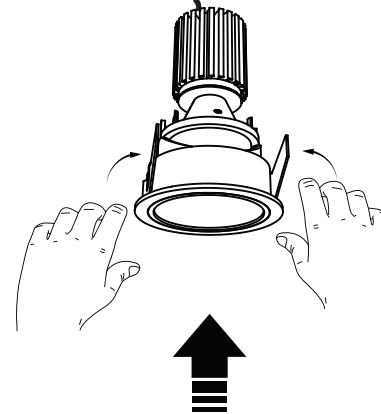
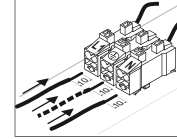
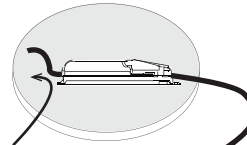


1 Installation

Cut the ceiling

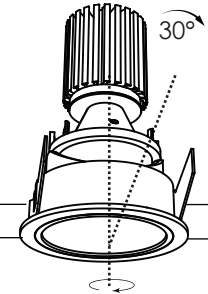


2 Make wiring connections

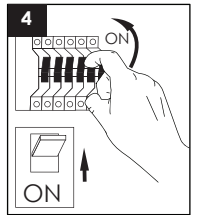


Connect the driver with the fixture.
Bend the springs of the fixture and fit it into the false ceiling.

3



Rotation of the inner part |
Vertical 30° / Horizontal 355°

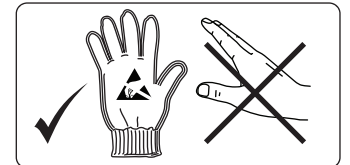


USER INSTRUCTIONS

- The installation of the unit must be done by a qualified electrician.
- The unit must be earthed in case an earth connecting point exists.
- Ensure that the mains is switched off during servicing.
- Do not use bulb(s) bigger than the indicated on units name-plate or packaging.
- Ensure that after the installation, the unit is properly fixed and the cable clamps (if exist) are well tightened.
- Manufacturer will not accept liability for injury or damage resulting from incorrect use or installation
- The unit is not intended to operate in loop connection.
- Wall plugs and terminals are not included.
- LED modules are replaced only by the manufacturer.

CAUTION

Wear anti-static gloves before you touch LED systems



Factory