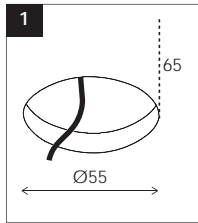
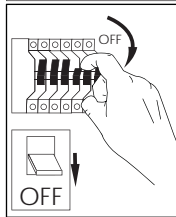




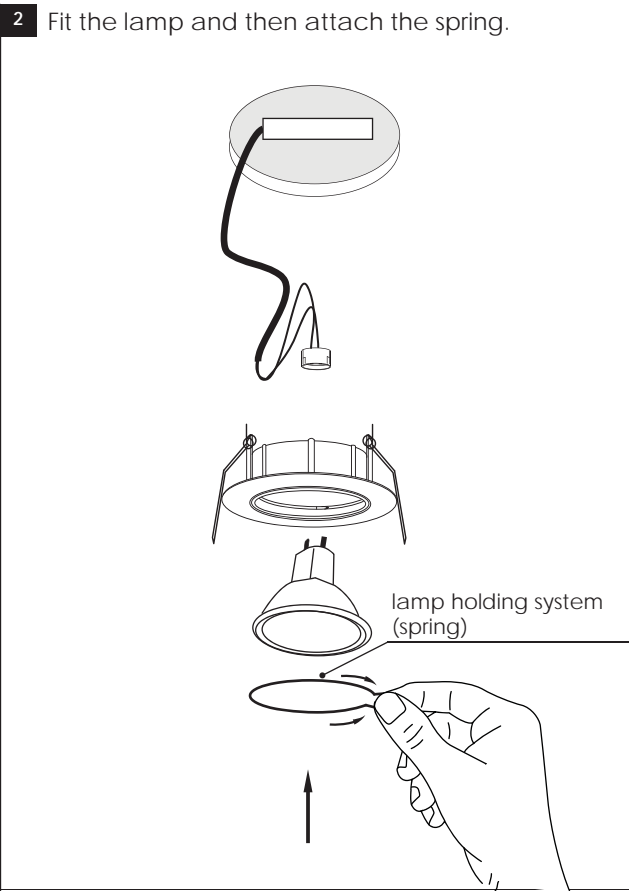
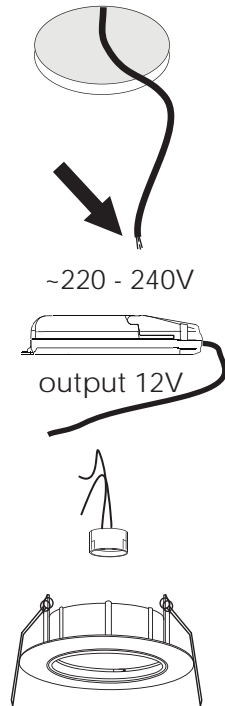
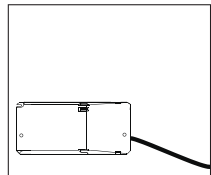
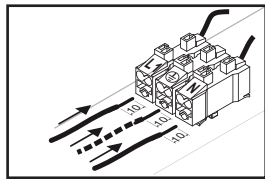
Ⓜ indoor/downlight recessed spots



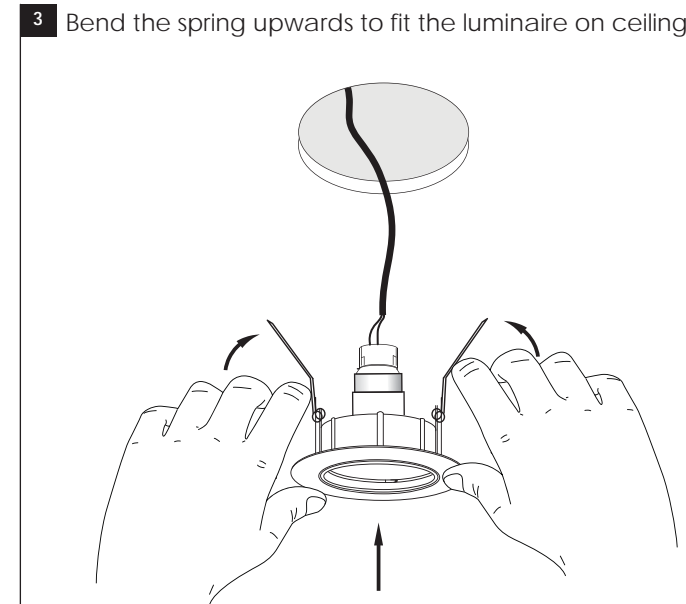
**1 Installation**



Cut hole on ceiling  
Make wiring connections

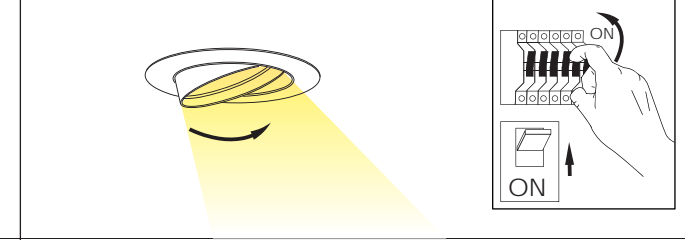


**2 Fit the lamp and then attach the spring.**



**3 Bend the spring upwards to fit the luminaire on ceiling**

Rotation: 30° vertical



**USER INSTRUCTIONS**

- The installation of the unit must be done by a qualified electrician.
- The unit must be earthed in case an earth connecting point exists.
- Ensure that the mains is switched off during servicing.
- Do not use bulb(s) bigger than the indicated on units name-plate or packaging.
- Ensure that after the installation, the unit is properly fixed and the cable clamps (if exist) are well tightened.
- Manufacturer will not accept liability for injury or damage resulting from incorrect use or installation
- The unit is not intended to operate in loop connection.
- Wall plugs and terminals are not included.