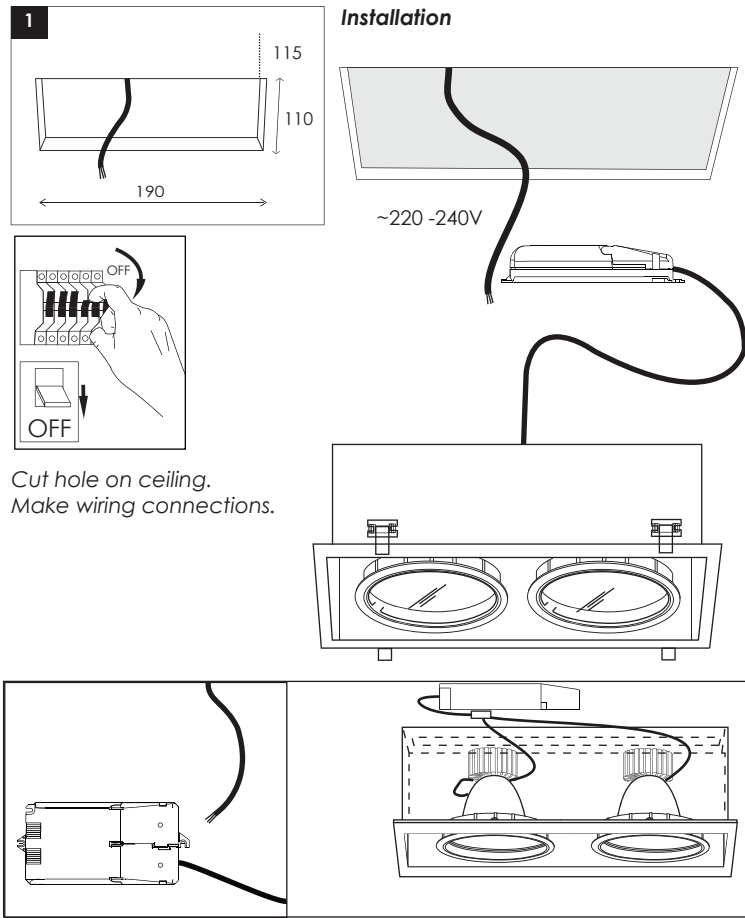
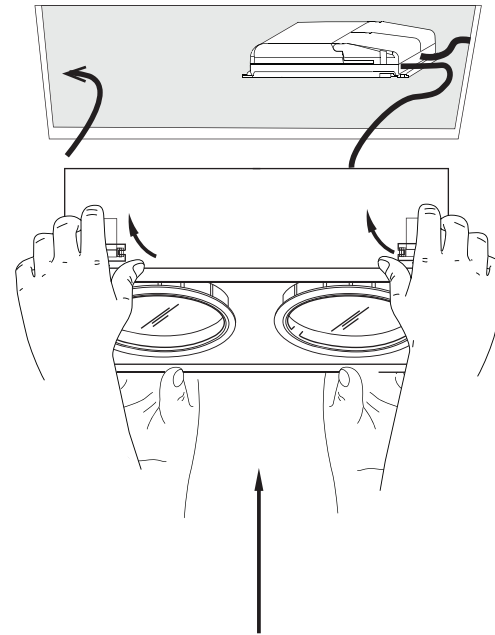


MINOR S 2F SSLED

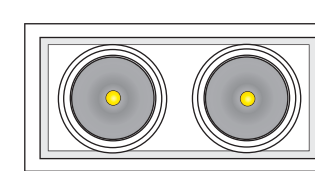
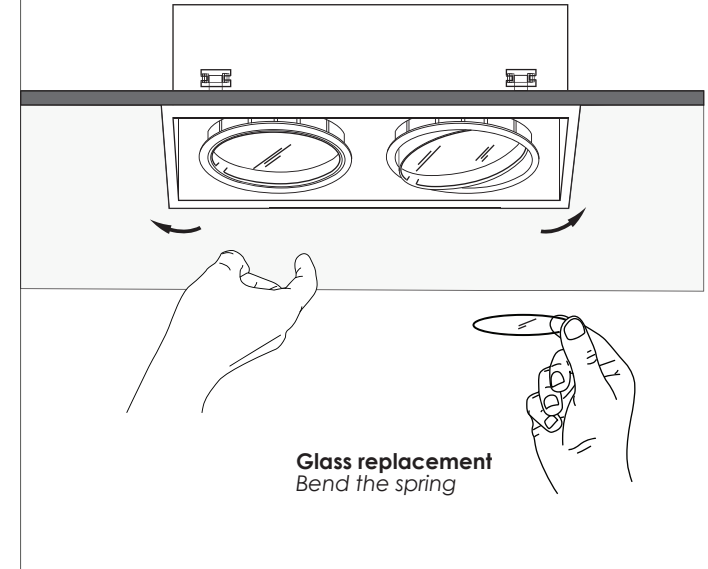
INSTALLATION INSTRUCTIONS FOR LUMINAIRE MINOR S 2F SSLED



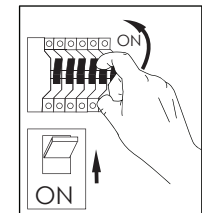
2 Bend the (4) springs to fit the fixture into the ceiling.



3 A multi-directional system allows the luminaire to rotate towards all directions.



Ceiling view



USER INSTRUCTIONS

- The installation of the unit must be done by a qualified electrician.
- The unit must be earthed in case an earth connecting point exists.
- Ensure that the mains is switched off during servicing.
- Do not use bulb(s) bigger than the indicated on units name-plate or packaging.
- Ensure that after the installation, the unit is properly fixed and the cable clamps (if exist) are well tightened.
- Manufacturer will not accept liability for injury or damage resulting from incorrect use or installation
- The unit is not intended to operate in loop connection.
- Wall plugs and terminals are not included.
- LED modules are replaced only by the manufacturer.

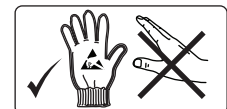
CAUTION

Replace any cracked shield



CAUTION

Wear anti-static gloves before you touch LED systems



UPDATE JUNE 2022