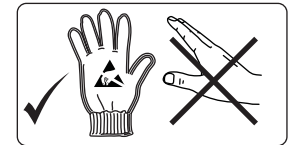
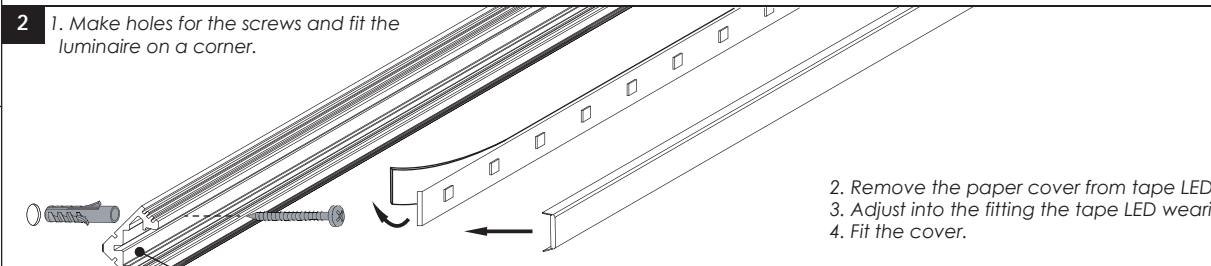
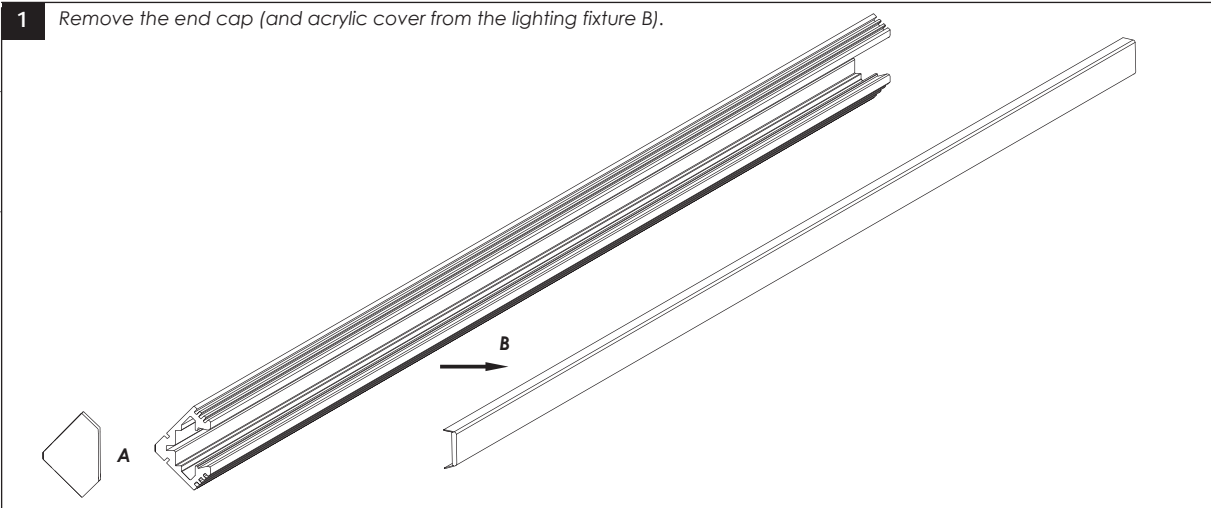
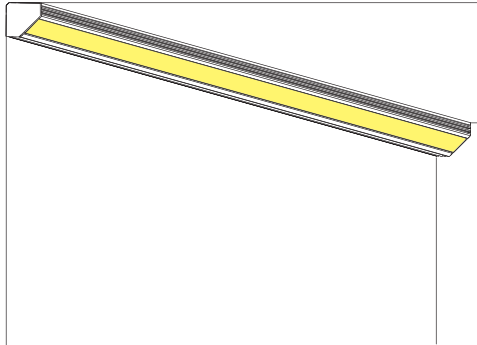


COMIS CORNER

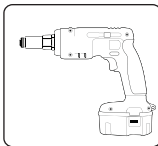
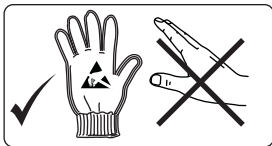
INSTALLATION INSTRUCTIONS FOR LUMINAIRE COMIS CORNER



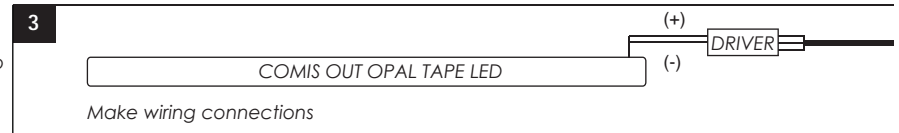
2. Remove the paper cover from tape LED.
3. Adjust into the fitting the tape LED wearing **anti-static gloves**.
4. Fit the cover.

CAUTION

Wear anti-static gloves before you touch LED systems



CAUTION:
Please note that tape LED must be attached on a dry and clean surface to remain in place.



USER INSTRUCTIONS

- The installation of the unit must be done by a qualified electrician.
- The unit must be earthed in case an earth connecting point exists.
- Ensure that the mains is switched off during servicing.
- Do not use bulb(s) bigger than the indicated on units name-plate or packaging.
- Ensure that after the installation, the unit is properly fixed and the cable clamps (if exist) are well tightened.
- Manufacturer will not accept liability for injury or damage resulting from incorrect use or installation
- The unit is not intended to operate in loop connection.
- Wall plugs and terminals are not included.



Last updated: October 2014