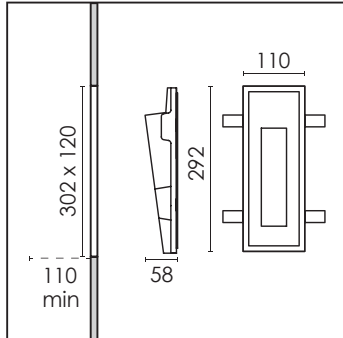


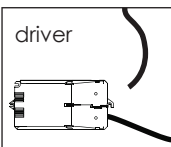
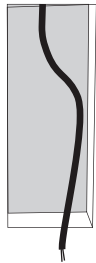
indoor/ wall recessed



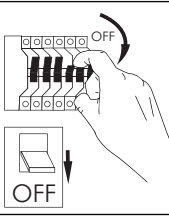
Dimensions



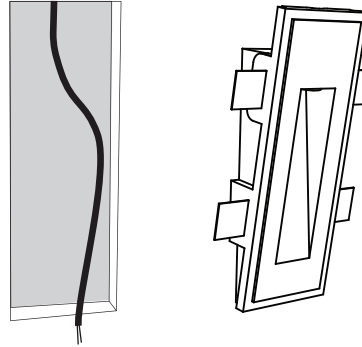
Cut false ceiling



1 Installation



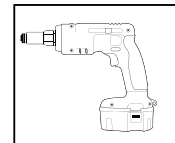
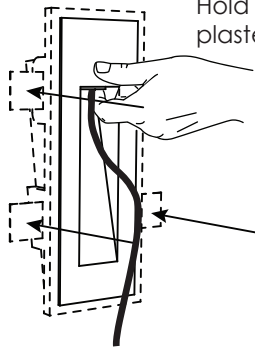
Pass the cable through the fixture.
Fit the fixture in the plasterboard.



2

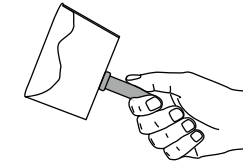
!Caution

Hold the fixture and screw on the plasterboard. Use a drill.



3

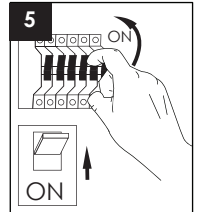
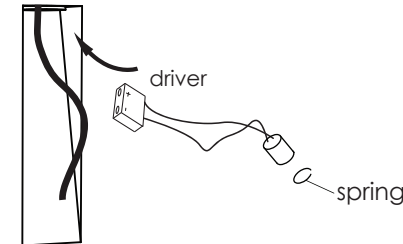
Fill the gaps on the plasterboard.
Then, paint.



4

Make wiring connections.
Insert the driver and LED into the fixture.
Place the spring to retain the LED.

INPUT
~220-240V



USER INSTRUCTIONS

- The installation of the unit must be done by a qualified electrician.
- The unit must be earthed in case an earth connecting point exists.
- Ensure that the mains is switched off during servicing.
- Do not use bulb(s) bigger than the indicated on units name-plate or packaging.
- Ensure that after the installation, the unit is properly fixed and the cable clamps (if exist) are well tightened.
- Manufacturer will not accept liability for injury or damage resulting from incorrect use or installation
- The unit is not intended to operate in loop connection.
- Wall plugs and terminals are not included.
- LED modules are replaced only by the manufacturer.

CAUTION

Wear anti-static gloves
before you touch LED systems

