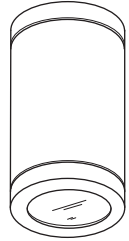


TERES 1 CEILING

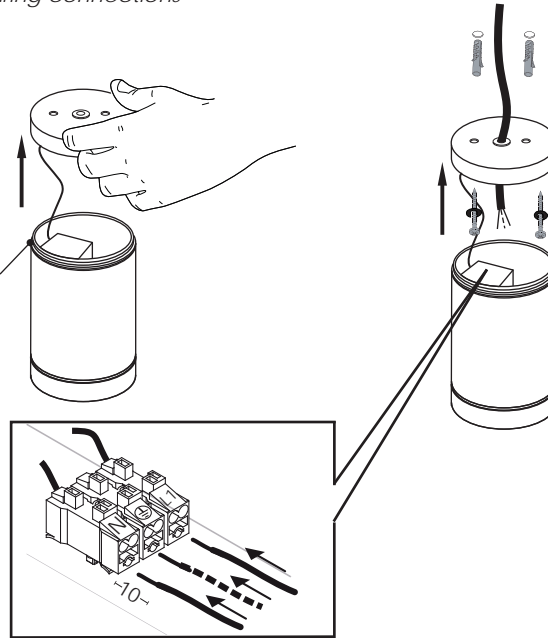
INSTALLATION INSTRUCTIONS FOR LUMINAIRE TERES 1 CEILING

1 Installation

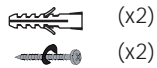
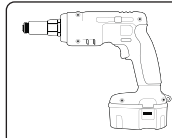
1. Remove the end cap.
2. Attach the end cap on ceiling using screws and wall plugs.
3. Make wiring connections.



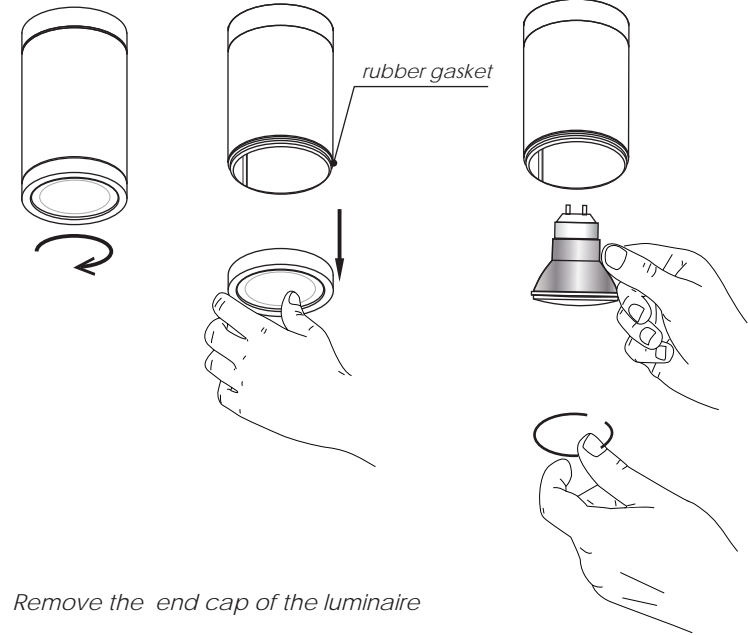
rubber gasket
NOTICE
Do not remove



Tool accessories



3 Lamp replacement



Remove the end cap of the luminaire

Insert the lamp in the lampholder

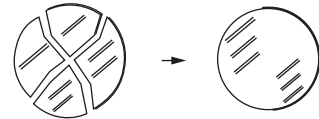
Fit the holding spring.

Fit the end cap back to the luminaire.

USER INSTRUCTIONS

- The installation of the unit must be done by a qualified electrician.
- The unit must be earthed in case an earth connecting point exists.
- Ensure that the mains is switched off during servicing.
- Do not use bulb(s) bigger than the indicated on units name-plate or packaging.
- Ensure that after the installation, the unit is properly fixed and the cable clamps (if exist) are well tightened.
- Manufacturer will not accept liability for injury or damage resulting from incorrect use or installation
- The unit is not intended to operate in loop connection.
- Wall plugs and terminals are not included.

CAUTION
Replace any cracked shield



IP64  

Last update: June 2017