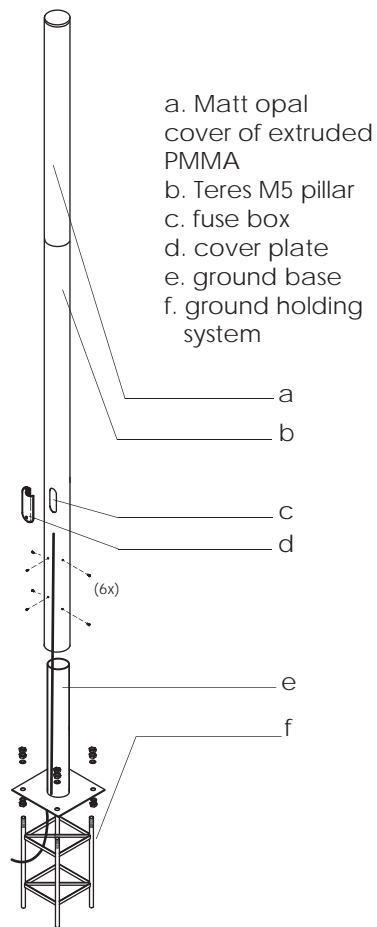


TERES M5 SH

installation instructions

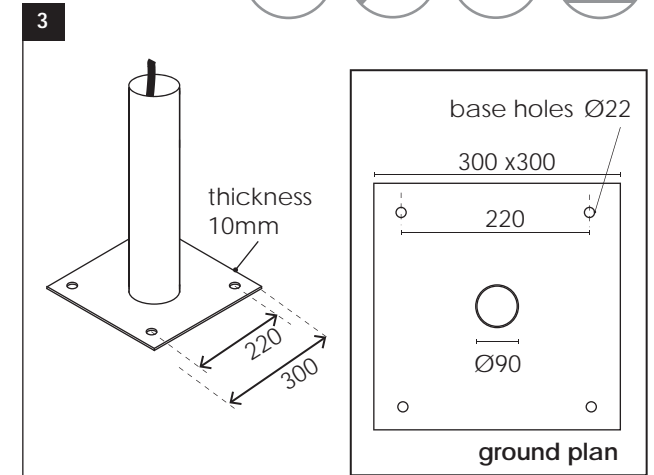
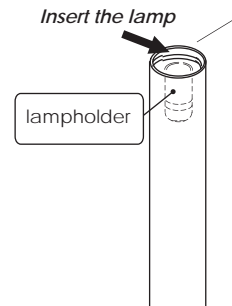
☉ outdoor



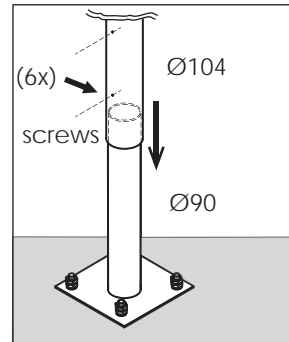
1 Lamp replacement / placement
Unscrew the opal cover to access the lampholder



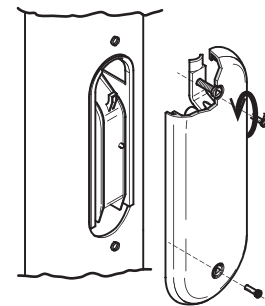
2 **CAUTION**
Please notice the silicone gasket. Do not remove.



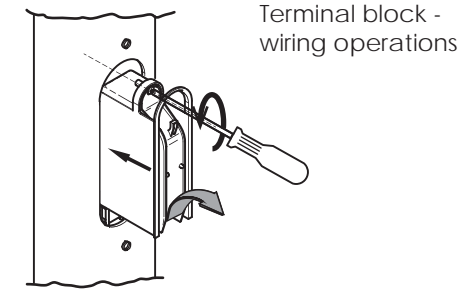
4 Fit the pillar on the ground base



5 Remove the cover plate



6 Open the fuse box



USER INSTRUCTIONS

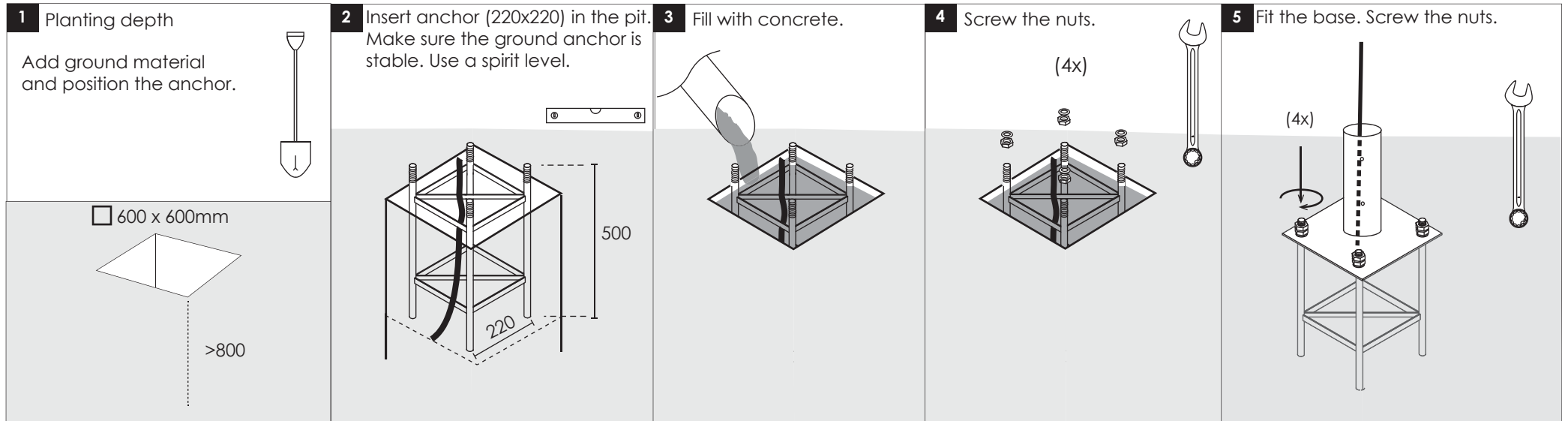
- The installation of the unit must be done by a qualified electrician.
- The unit must be earthed in case an earth connecting point exists.
- Ensure that the mains is switched off during servicing.
- Do not use bulb(s) bigger than the indicated on units name-plate or packaging.
- Ensure that after the installation, the unit is properly fixed and the cable clamps (if exist) are well tightened.
- Manufacturer will not accept liability for injury or damage resulting from incorrect use or installation
- The unit is not intended to operate in loop connection.
- Wall plugs and terminals are not included.

CAUTION
Replace any cracked shield



Ground holding system | anchor

INSTALLATION INSTRUCTIONS OF GROUND ANCHOR



USER INSTRUCTIONS

- The installation of the unit must be done by a qualified electrician.
- The unit must be earthed in case an earth connecting point exists.
- Ensure that the mains is switched off during servicing.
- Do not use bulb(s) bigger than the indicated on units name-plate or packaging.
- Ensure that after the installation, the unit is properly fixed and the cable clamps (if exist) are well tightened.
- Manufacturer will not accept liability for injury or damage resulting from incorrect use or installation
- The unit is not intended to operate in loop connection.
- Wall plugs and terminals are not included.

