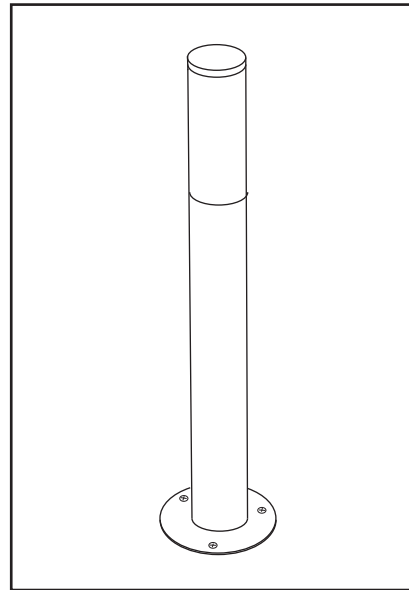


TERES 5

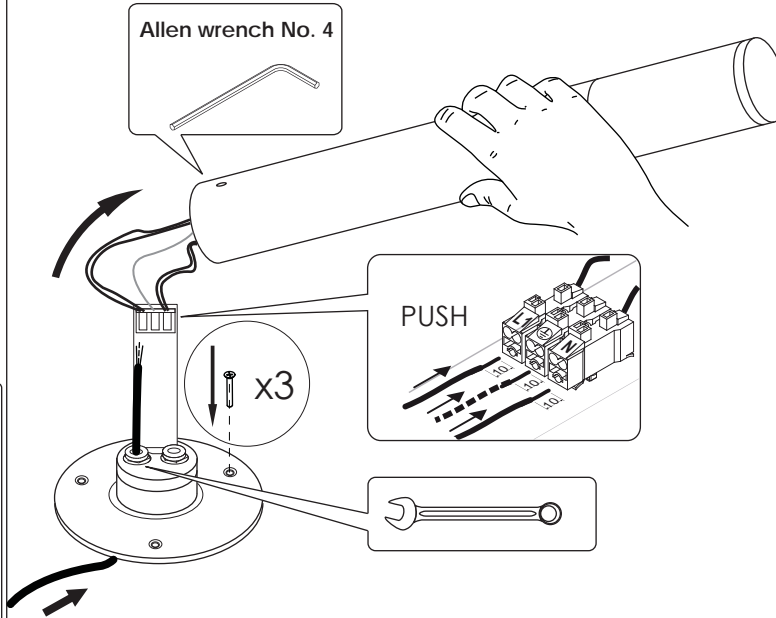
INSTALLATION INSTRUCTIONS FOR LUMINAIRE TERES 5

1 Installation

- Release allen screw and remove the upper part of the luminaire.
- Insert cable through the cable gland.
- Screw luminaire base on the ground with (3) screws.
- Make wiring connections.



Allen wrench No. 4

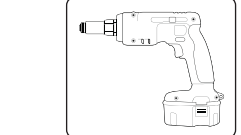


PUSH

x3

Useful tools

Allen wrench No 4



(x3)
(x3)

USER INSTRUCTIONS

- The installation of the unit must be done by a qualified electrician.
- The unit must be earthed in case an earth connecting point exists.
- Ensure that the mains is switched off during servicing.
- Do not use bulb(s) bigger than the indicated on units name-plate or packaging.
- Ensure that after the installation, the unit is properly fixed and the cable clamps (if exist) are well tightened.
- Manufacturer will not accept liability for injury or damage resulting from incorrect use or installation
- The unit is not intended to operate in loop connection.
- Wall plugs and terminals are not included.

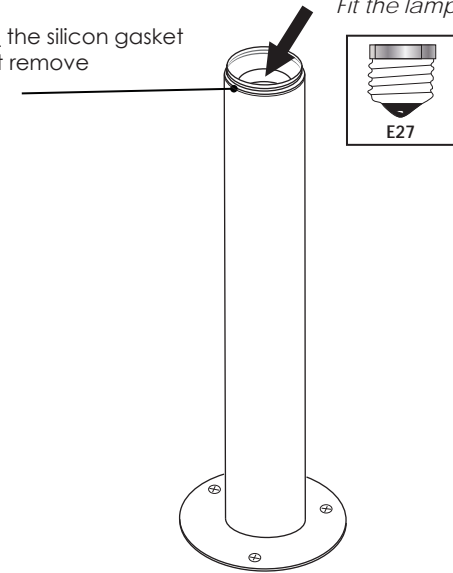
2 Install/ replace lamp

Remove the cap and fit the lamp



notice the silicon gasket do not remove

Fit the lamp



E27

CAUTION

Replace any cracked shield



IP65  

Last updated: July 2016

BRIGHT
SPECIAL LIGHTING

www.bright.gr

Factory: 5 Kefalovrisou Str., Monomati, Acharnai, P.O. Box 13677, Athens, Greece
Tel: (+30) 210 6208 230 Fax: (+30) 210 62 08 262 E-mail: info@bright.gr

