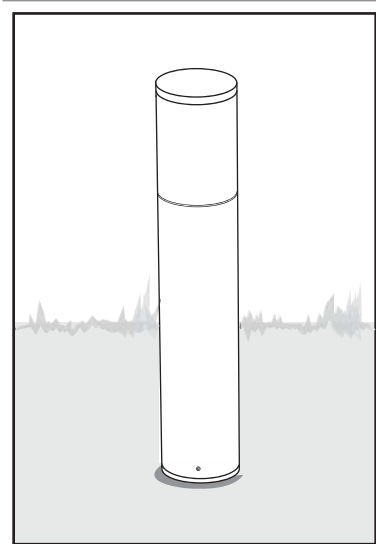
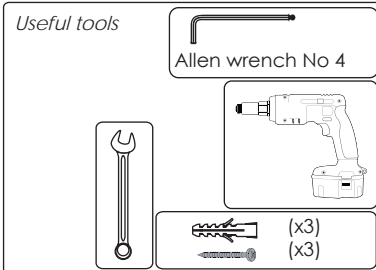
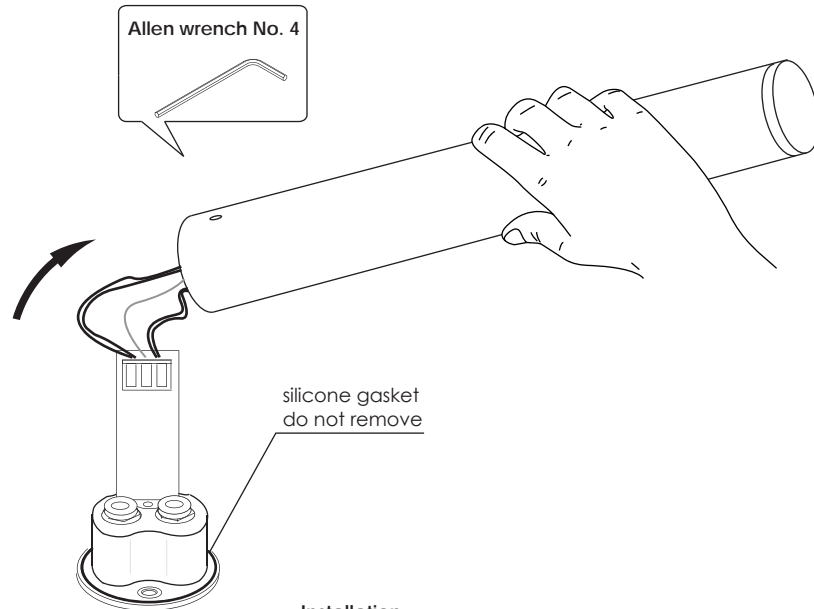


TERES M5 SMOOTH

☉ outdoor/



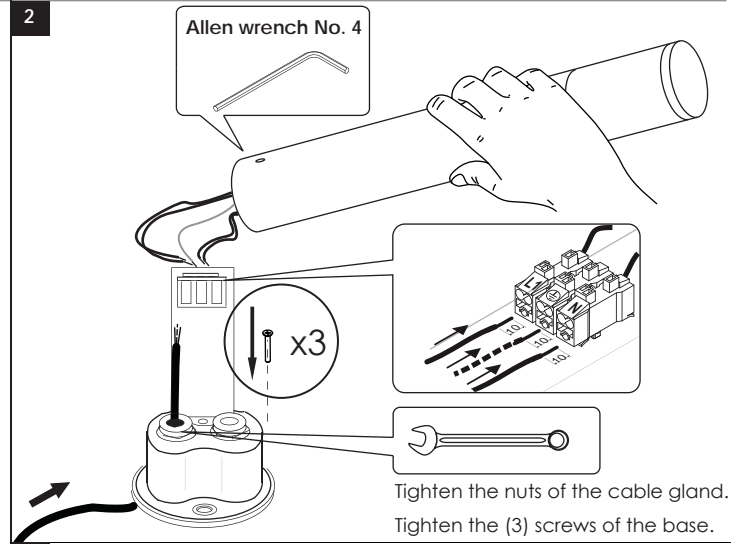
1 Release allen screws and remove the upper part of the luminaire.



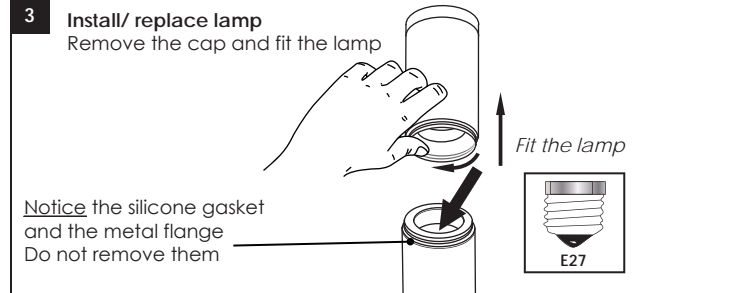
Installation

Insert cable through the cable gland.
 Screw luminaire base on the ground with (3) screws.
 Make wiring connections. Fit the wires into the terminal block.
 Tighten the (3) screws of the base

2



3



USER INSTRUCTIONS

- The installation of the unit must be done by a qualified electrician.
- The unit must be earthed in case an earth connecting point exists.
- Ensure that the mains is switched off during servicing.
- Do not use bulb(s) bigger than the indicated on units name-plate or packaging.
- Ensure that after the installation, the unit is properly fixed and the cable clamps (if exist) are well tightened.
- Manufacturer will not accept liability for injury or damage resulting from incorrect use or installation
- The unit is not intended to operate in loop connection.
- Wall plugs and terminals are not included.
- LED modules are replaced only by the manufacturer.

CAUTION
 Replace any cracked shield



IP65

Factory

5 Kefalovrisou Str., Monomati, Acharnai, P.O. Box 13677, Athens, Greece | Tel: (+30) 210 6208 230
 E-mail: info@bright.gr | www.bright.gr