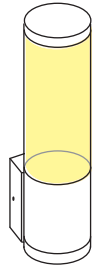


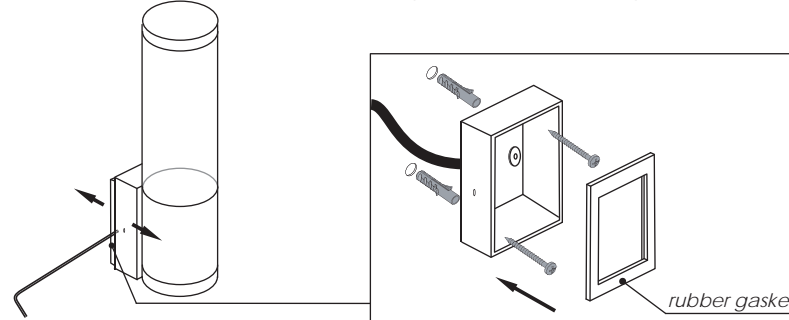
TERES 3

INSTALLATION INSTRUCTIONS FOR LUMINAIRE TERES 3

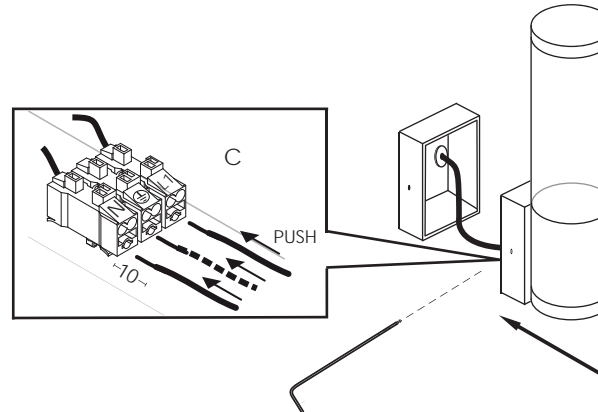


1 Installation

1. Release the (2) Allen screws with a wrench and remove the inner base.
2. Make wiring connections
3. Attach the luminaire on wall using screws and wall plugs.

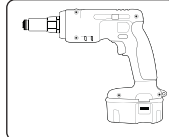


2 Attach the luminaire on the base wall and tighten the (2) screws.



Tool accessories

allen wrench No 2.5

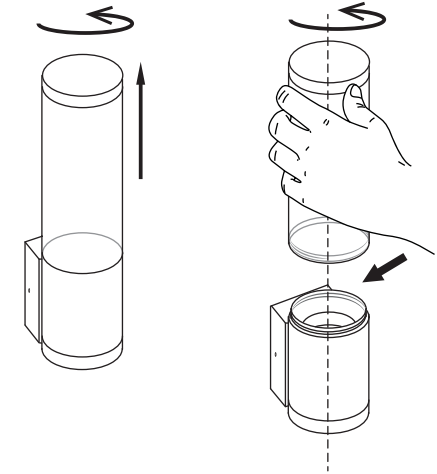


(x2)



(x2)

3 Lamp replacement



Remove the cover cap of the luminaire

Insert the lamp in the lampholder

Fit the safety glass with the silicone rubber gasket in the fitting.
Tighten (2) allen screws to secure cover cap.

USER INSTRUCTIONS

- The installation of the unit must be done by a qualified electrician.
- The unit must be earthed in case an earth connecting point exists.
- Ensure that the mains is switched off during servicing.
- Do not use bulb(s) bigger than the indicated on units name-plate or packaging.
- Ensure that after the installation, the unit is properly fixed and the cable clamps (if exist) are well tightened.
- Manufacturer will not accept liability for injury or damage resulting from incorrect use or installation
- The unit is not intended to operate in loop connection.
- Wall plugs and terminals are not included.

IP65  

Date Issued: June 2014

BRIGHT
SPECIAL LIGHTING

www.bright.gr

Factory: 5 Kefalovrisou Str., Monomati, Axarnai, P.O. Box 13677, Athens, Greece
Tel: (+30) 210 6208 230 Fax: (+30) 210 62 08 262

