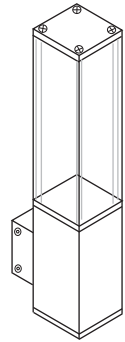


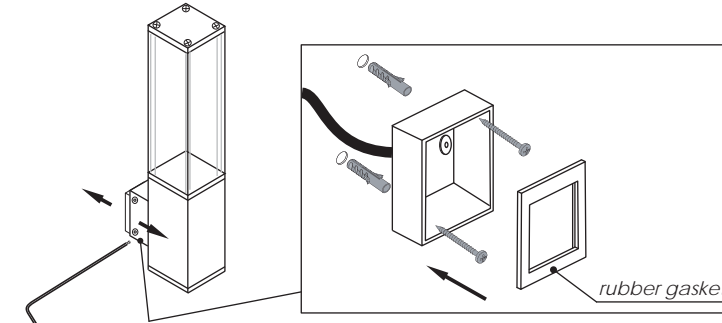
TERES 3 SQUARE

INSTALLATION INSTRUCTIONS FOR LUMINAIRE TERES 3 SQUARE

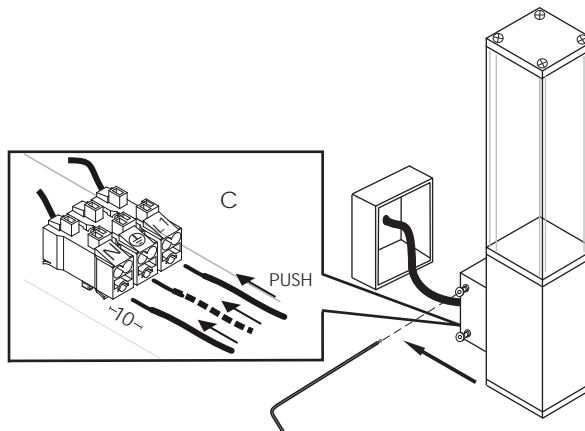


1 Installation

1. Release the (2) Allen screws with a wrench and remove the inner base.
2. Make wiring connections
3. Attach the luminaire on wall using screws and wall plugs.

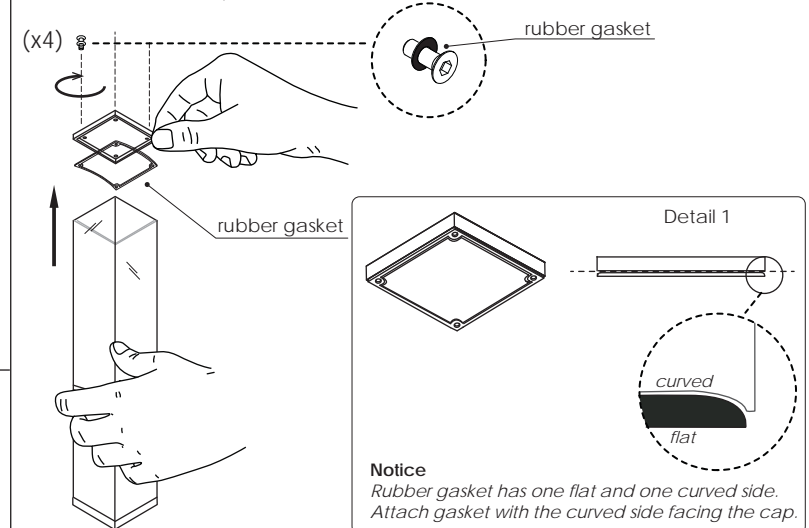


2 Attach the luminaire on the base wall and tighten the (2) screws.

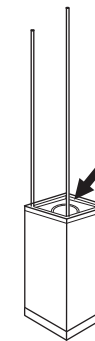


3 Lamp replacement

- Loosen the (4) screws to remove the upper cap to access the lamp.
Remove the cover cap of the luminaire



Notice
Rubber gasket has one flat and one curved side.
Attach gasket with the curved side facing the cap.

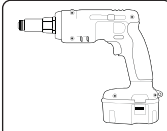


1. Insert the lamp
2. Close luminaire by fitting the cover lamp, the rubber gasket and the cap.
3. Tighten the (4) screws.

Notice
When closing the cap, fit the rubber gasket as shown in Detail 1

Tool accessories

allen wrench No 2.5



(x2)

(x2)

USER INSTRUCTIONS

- The installation of the unit must be done by a qualified electrician.
- The unit must be earthed in case an earth connecting point exists.
- Ensure that the mains is switched off during servicing.
- Do not use bulb(s) bigger than the indicated on units name-plate or packaging.
- Ensure that after the installation, the unit is properly fixed and the cable clamps (if exist) are well tightened.
- Manufacturer will not accept liability for injury or damage resulting from incorrect use or installation
- The unit is not intended to operate in loop connection.
- Wall plugs and terminals are not included.

IP65  

Date Issued: June 2014

BRIGHT
SPECIAL LIGHTING

www.bright.gr

Factory: 5 Kefalovrisou Str., Monomati, Aharnai, P.O. Box 13677, Athens, Greece
Tel: (+30) 210 6208 230 Fax: (+30) 210 62 08 262

